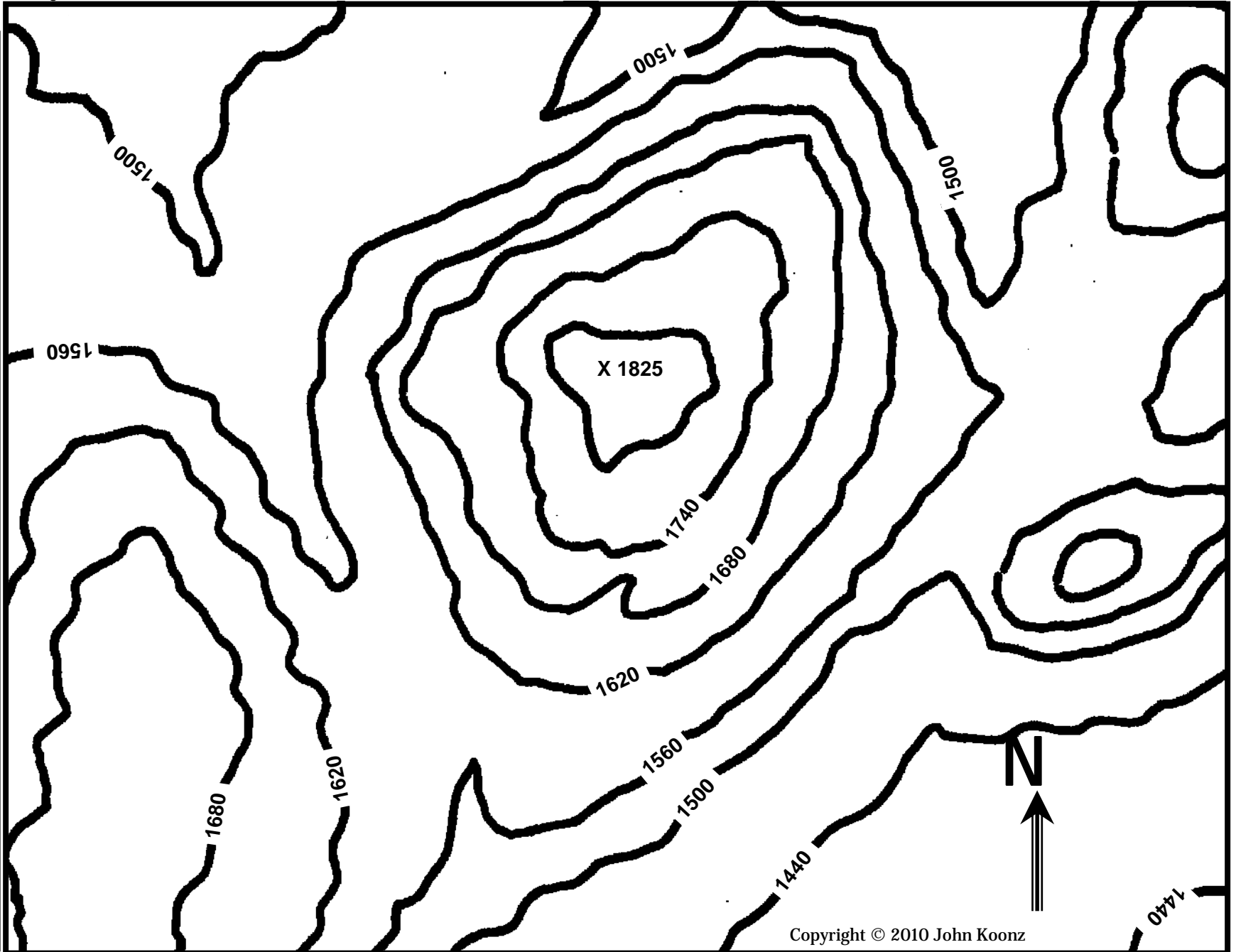


Covers TEKS: §112.19. (b)(8)(B)
§112.16. (b)(7)(B) §112.20. (b)(9)(C)
§112.18. (b)(10)(B) §112.36. (c)(11)(A)

## Enchanted Rock



Copyright © 2010 John Koonz

**Enchanted Rock** is an example of an exfoliation dome. The granite that composes the dome intruded into existing schists and gneisses 1000 million years ago. Since then, these Precambrian metamorphic rocks, as well as more recent Cretaceous limestone, have eroded away.



Scale 1 : 5760  
 1"=480'  
 Contour Interval: 60'

(If 1/8" thick cardboard is used to build this model, there will be NO vertical exaggeration.)