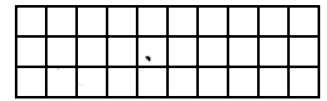
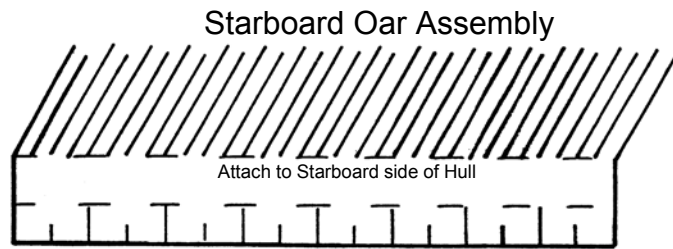




# Phoenician Trireme from Warship-Conquest of the Mediterranean

For more information, visit the Geoblox website [www.geoblox.com](http://www.geoblox.com)

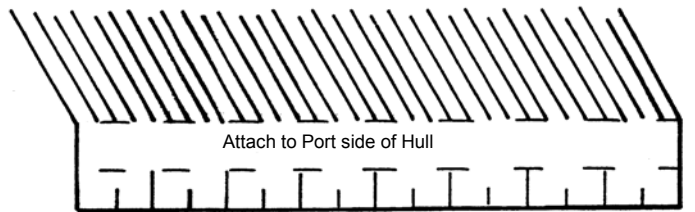


30 Marines (Do not separate into individuals)

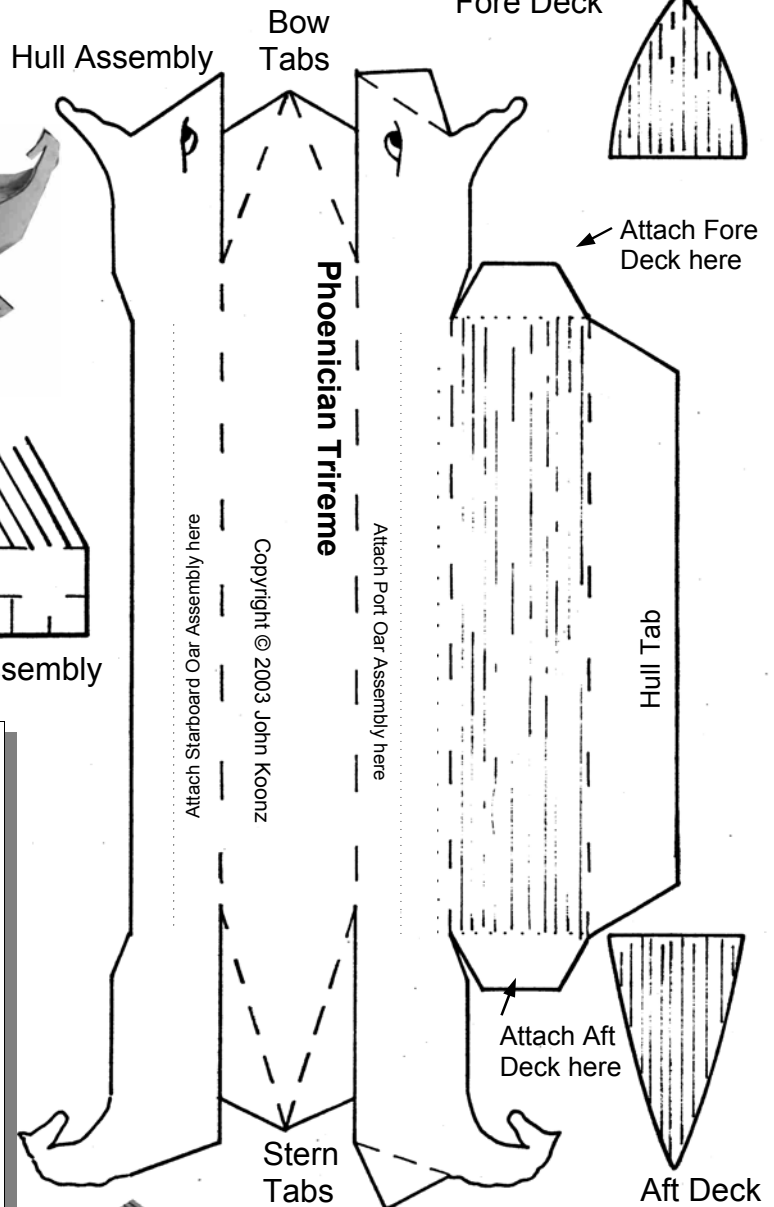
Fore Deck



Image of finished model:



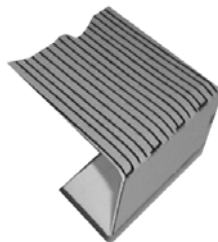
Port Oar Assembly



Copyright © 2003 John Koonz

## Instructions:

1. For best results, copy the ship model patterns onto cardstock.
2. Cut along the solid lines, but do not cut out the individual marine grids.
3. Fold along dashed lines after creasing with the blunt side of a pair of scissors.
4. Glue Hull Tab to inside of ship.
5. Turn up Bow Tabs and test fit the parts before gluing.
6. Trim the bow end of the deck so that it fits level inside the Hull Assembly.
7. Attach the Bow Tabs to the inside of the Hull Assembly.
8. Turn up Stern Tabs and attach to the inside of the Hull Assembly.
9. Trim and attach the Aft Deck.
10. Fold and glue the Oar Assemblies (See Image at right)
11. Attach the Oar Assemblies to the Hull.
12. Glue the Marine grid to the deck of the ship.



Starboard Oar Assembly about to be glued together.